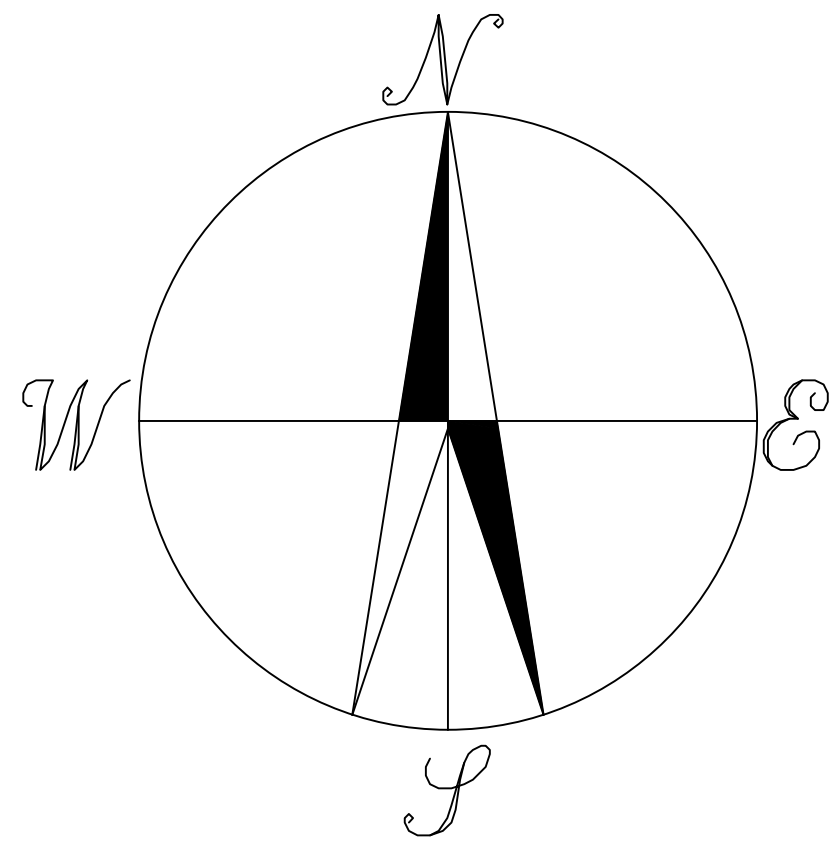


TOWN OF ARRIBA SECTIONS 1 & 12 TOWNSHIP 9 SOUTH RANGE 53 WEST



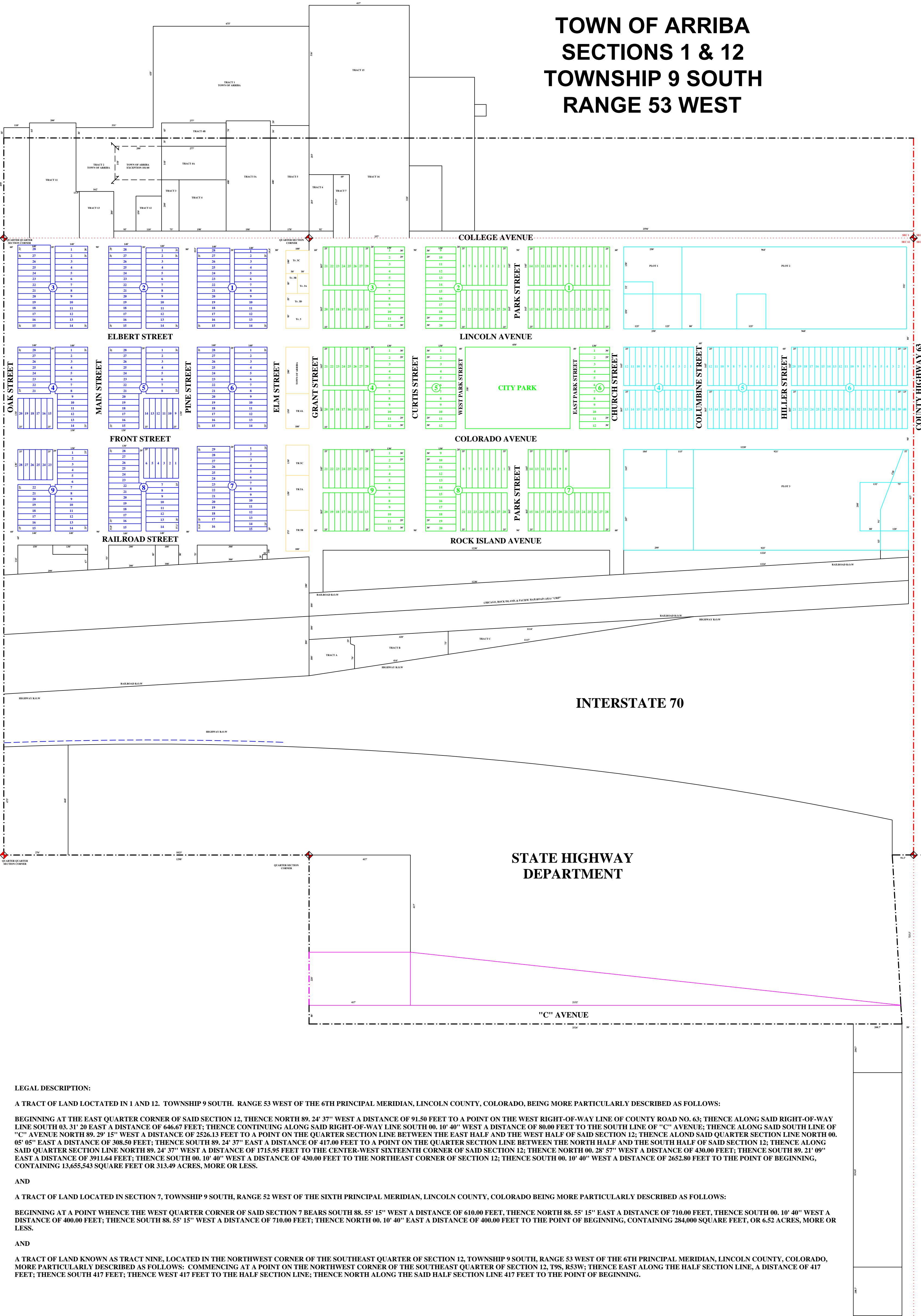
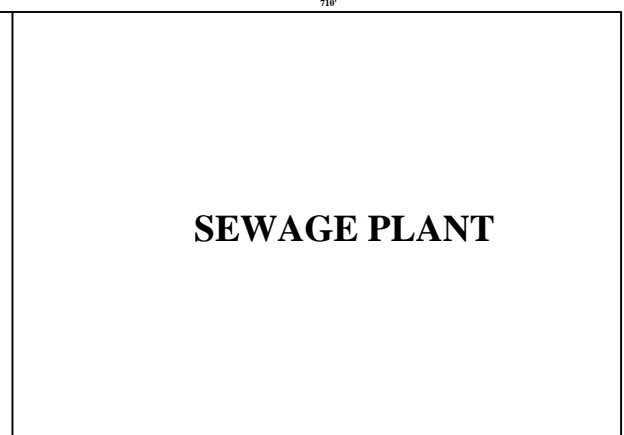
NOT TO SCALE

LEGEND	
[Blue outline]	ORIGINAL
[Green outline]	FRONTIER ADDITION
[Cyan outline]	COULSON'S ADDITION
[Magenta outline]	PARKER ADDITION
[Yellow outline]	NO MANS LAND
[Red dashed line]	SECTION LINE
[Black dashed line]	CITY LIMITS

MAPS ARE FOR COUNTY PURPOSES ONLY

Lincoln County Assessor's Office, Mapping Dept.
4/11/2006 Town of Arriba.dwg

Drawn By: Jeremiah Higgins 2002



LEGAL DESCRIPTION:

A TRACT OF LAND LOCATED IN 1 AND 12. TOWNSHIP 9 SOUTH, RANGE 53 WEST OF THE 6TH PRINCIPAL MERIDIAN, LINCOLN COUNTY, COLORADO, BEING MORE PARTICULARLY DESCRIBED AS FOLLOWS:
 BEGINNING AT THE EAST QUARTER CORNER OF SAID SECTION 12, THENCE NORTH 89.24' 37" WEST A DISTANCE OF 91.50 FEET TO A POINT ON THE WEST RIGHT-OF-WAY LINE OF COUNTY ROAD NO. 63; THENCE ALONG SAID RIGHT-OF-WAY LINE SOUTH 03.31' 20" EAST A DISTANCE OF 646.67 FEET; THENCE CONTINUING ALONG SAID RIGHT-OF-WAY LINE SOUTH 00.10' 40" WEST A DISTANCE OF 80.00 FEET TO THE SOUTH LINE OF "C" AVENUE; THENCE ALONG SAID SOUTH LINE OF "C" AVENUE NORTH 89.29' 15" WEST A DISTANCE OF 2526.13 FEET TO A POINT ON THE QUARTER SECTION LINE BETWEEN THE EAST HALF AND THE WEST HALF OF SAID SECTION 12; THENCE ALONG SAID QUARTER SECTION LINE NORTH 00.05' 05" EAST A DISTANCE OF 388.50 FEET; THENCE SOUTH 89.24' 37" EAST A DISTANCE OF 417.00 FEET TO A POINT ON THE QUARTER SECTION LINE BETWEEN THE NORTH HALF AND THE SOUTH HALF OF SAID SECTION 12; THENCE ALONG SAID QUARTER SECTION LINE NORTH 89.24' 37" WEST A DISTANCE OF 1715.95 FEET TO THE CENTER-WEST SIXTEENTH CORNER OF SAID SECTION 12; THENCE NORTH 00.28' 57" WEST A DISTANCE OF 430.00 FEET; THENCE SOUTH 89.21' 09" EAST A DISTANCE OF 3911.64 FEET; THENCE SOUTH 00.10' 40" WEST A DISTANCE OF 430.00 FEET TO THE NORTHEAST CORNER OF SECTION 12; THENCE SOUTH 00.10' 40" WEST A DISTANCE OF 2652.80 FEET TO THE POINT OF BEGINNING, CONTAINING 13,655,543 SQUARE FEET OR 313.49 ACRES, MORE OR LESS.

AND

A TRACT OF LAND LOCATED IN SECTION 7, TOWNSHIP 9 SOUTH, RANGE 52 WEST OF THE SIXTH PRINCIPAL MERIDIAN, LINCOLN COUNTY, COLORADO BEING MORE PARTICULARLY DESCRIBED AS FOLLOWS:
 BEGINNING AT A POINT WHEN THE WEST QUARTER CORNER OF SAID SECTION 7 BEARS SOUTH 88.55' 15" WEST A DISTANCE OF 610.00 FEET, THENCE NORTH 88.55' 15" EAST A DISTANCE OF 710.00 FEET, THENCE SOUTH 00.10' 40" WEST A DISTANCE OF 400.00 FEET; THENCE SOUTH 88.55' 15" WEST A DISTANCE OF 710.00 FEET; THENCE NORTH 00.10' 40" EAST A DISTANCE OF 400.00 FEET TO THE POINT OF BEGINNING, CONTAINING 284,000 SQUARE FEET, OR 6.52 ACRES, MORE OR LESS.

AND

A TRACT OF LAND KNOWN AS TRACT NINE, LOCATED IN THE NORTHWEST CORNER OF THE SOUTHEAST QUARTER OF SECTION 12, TOWNSHIP 9 SOUTH, RANGE 53 WEST OF THE 6TH PRINCIPAL MERIDIAN, LINCOLN COUNTY, COLORADO, MORE PARTICULARLY DESCRIBED AS FOLLOWS: COMMENCING AT A POINT ON THE NORTHWEST CORNER OF THE SOUTHEAST QUARTER OF SECTION 12, T9S, R53W; THENCE EAST ALONG THE HALF SECTION LINE, A DISTANCE OF 417 FEET; THENCE SOUTH 417 FEET; THENCE WEST 417 FEET TO THE HALF SECTION LINE; THENCE NORTH ALONG THE SAID HALF SECTION LINE 417 FEET TO THE POINT OF BEGINNING.